

856 Ship Notice/Manifest

Functional Group ID=**SH**

Introduction:

This Draft Standard for Trial Use contains the format and establishes the data contents of the Ship Notice/Manifest Transaction Set (856) for use within the context of an Electronic Data Interchange (EDI) environment. The transaction set can be used to list the contents of a shipment of goods as well as additional information relating to the shipment, such as order information, product description, physical characteristics, type of packaging, marking, carrier information, and configuration of goods within the transportation equipment. The transaction set enables the sender to describe the contents and configuration of a shipment in various levels of detail and provides an ordered flexibility to convey information. The sender of this transaction is the organization responsible for detailing and communicating the contents of a shipment, or shipments, to one or more receivers of the transaction set. The receiver of this transaction set can be any organization having an interest in the contents of a shipment or information about the contents of a shipment.

Heading:

Page No.	Pos. No.	Seg. ID	Name	Req. Des.	Max.Use	Loop Repeat	Notes and Comments
5	010	ST	Transaction Set Header	M	1		
6	020	BSN	Beginning Segment for Ship Notice	M	1		

Detail:

Page No.	Pos. No.	Seg. ID	Name	Req. Des.	Max.Use	Loop Repeat	Notes and Comments
LOOP ID - HL							200000
7	010	HL	Hierarchical Level	M	1		c1
8	110	TD1	Carrier Details (Quantity and Weight)	M	20		
9	120	TD5	Carrier Details (Routing Sequence/Transit Time)	M	12		
10	150	REF	Reference Identification	M	2		
11	200	DTM	Date/Time Reference	M	10		
LOOP ID - N1							2
12	220	N1	Name	M	1		

Detail:

Page No.	Pos. No.	Seg. ID	Name	Req. Des.	Max.Use	Loop Repeat	Notes and Comments
LOOP ID - HL							200000
13	010	HL	Hierarchical Level	M	1		
14	050	PRF	Purchase Order Reference	M	1		
15	150	REF	Reference Identification	M	4		
LOOP ID - N1							200
17	220	N1	Name	M	1		

Detail:

Page No.	Pos. No.	Seg. ID	Name	Req. Des.	Max.Use	Loop Repeat	Notes and Comments
LOOP ID - HL							200000
18	010	HL	Hierarchical Level	M	1		

Detail:

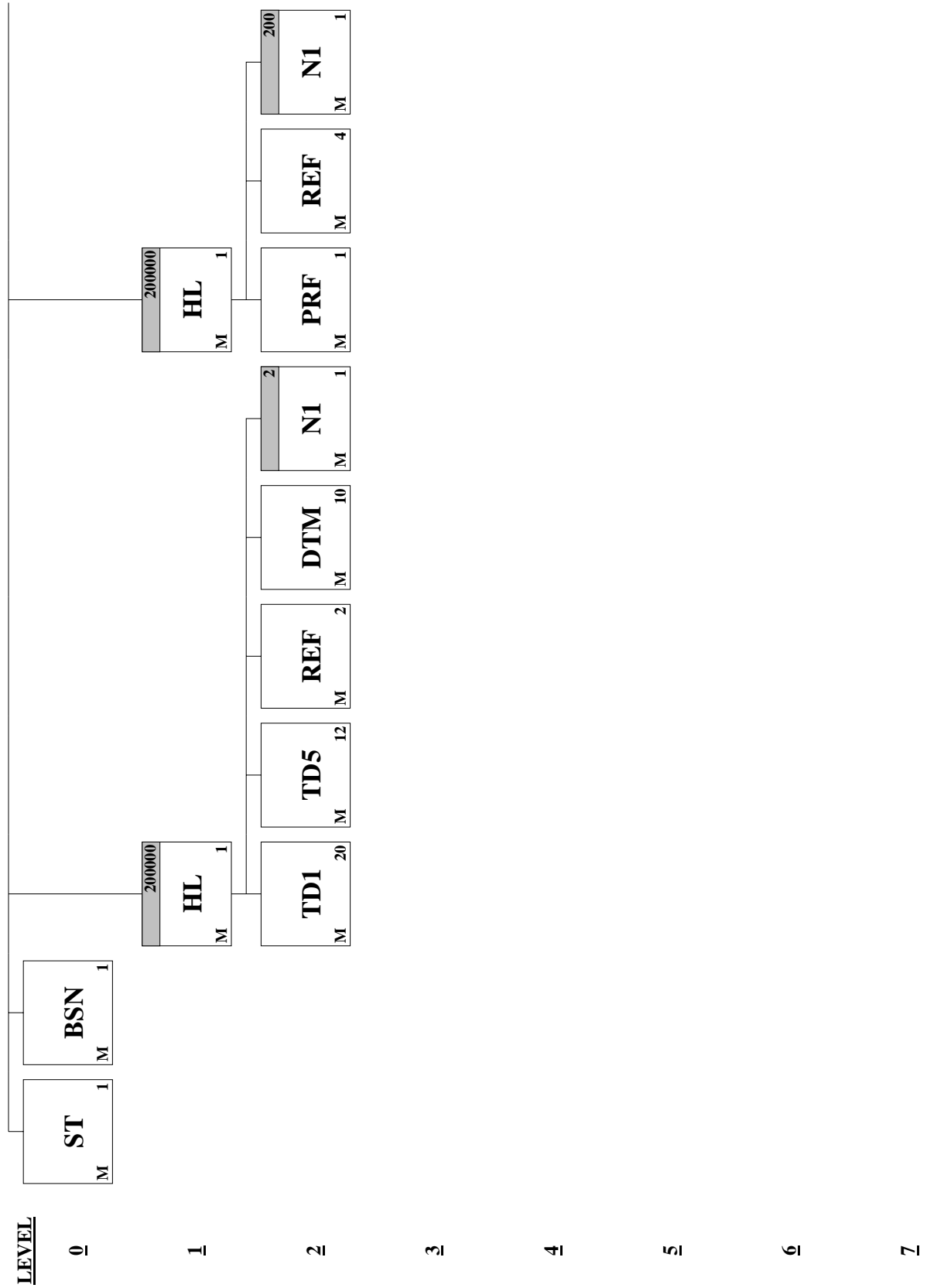
<u>Page No.</u>	<u>Pos. No.</u>	<u>Seg. ID</u>	<u>Name</u>	<u>Req. Des.</u>	<u>Max.Use</u>	<u>Loop Repeat</u>	<u>Notes and Comments</u>
			LOOP ID - HL			200000	
20	010	HL	Hierarchical Level	M	1		
21	020	LIN	Item Identification	M	1		
22	030	SN1	Item Detail (Shipment)	M	1		

Summary:

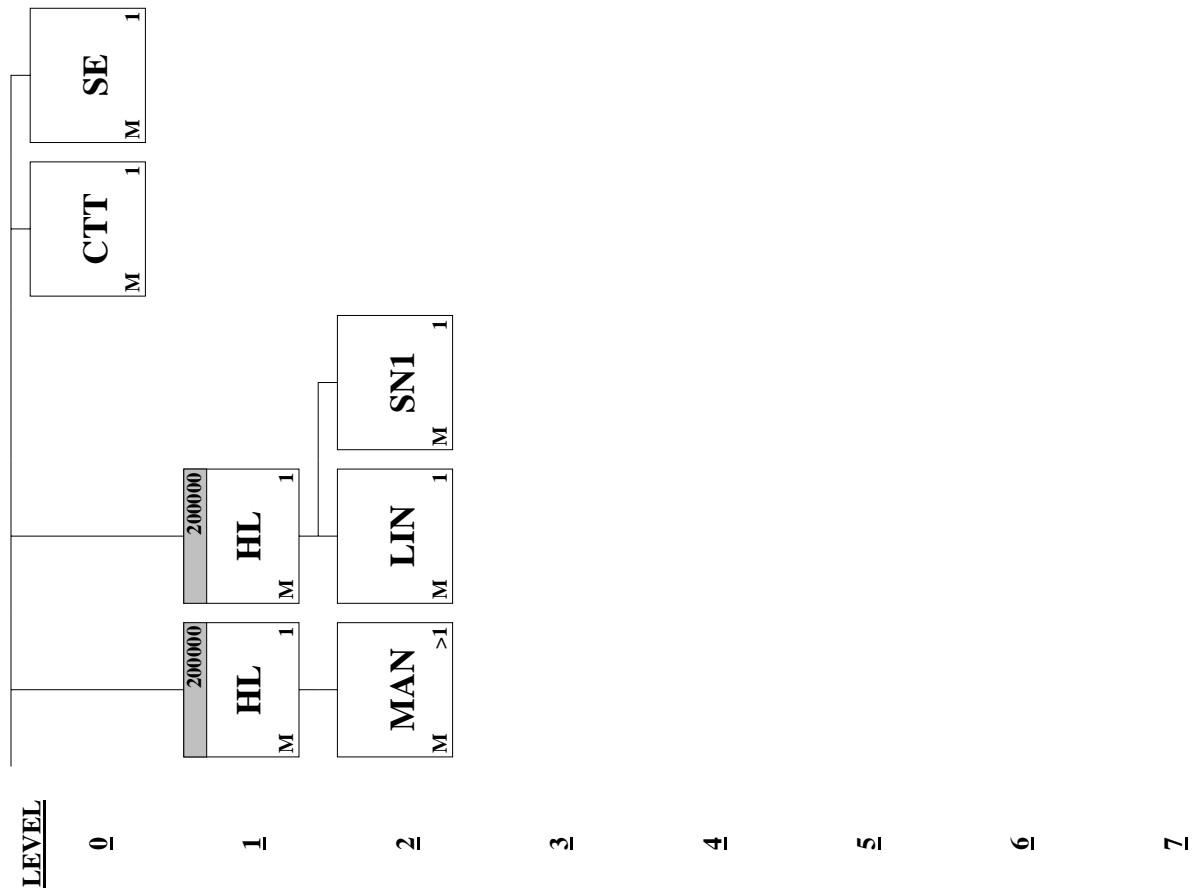
<u>Page No.</u>	<u>Pos. No.</u>	<u>Seg. ID</u>	<u>Name</u>	<u>Req. Des.</u>	<u>Max.Use</u>	<u>Loop Repeat</u>	<u>Notes and Comments</u>
23	010	CTT	Transaction Totals	M	1		
24	020	SE	Transaction Set Trailer	M	1		

Transaction Set Comments

1. The HL segment is the only mandatory segment within the HL loop, and by itself, the HL segment has no meaning.



MODELLS SPORTING GOODS EDI SPECIFICATIONS



Segment: **ST** Transaction Set Header
Position: 010
Loop:
Level: Heading
Usage: Mandatory
Max Use: 1
Purpose: To indicate the start of a transaction set and to assign a control number
Comments:
Notes: EXAMPLE: 856*0001~

Data Element Summary

	<u>Ref.</u>	<u>Data</u>	<u>Name</u>	<u>Attributes</u>
	<u>Des.</u>	<u>Element</u>		
M	ST01	143	Transaction Set Identifier Code Code uniquely identifying a Transaction Set 856 Ship Notice/Manifest	M ID 3/3
M	ST02	329	Transaction Set Control Number Identifying control number that must be unique within the transaction set functional group assigned by the originator for a transaction set	M AN 4/9

Segment: **BSN** Beginning Segment for Ship Notice
Position: 020
Loop:
Level: Heading
Usage: Mandatory
Max Use: 1
Purpose: To transmit identifying numbers, dates, and other basic data relating to the transaction set
Comments: 1 BSN06 and BSN07 differentiate the functionality of use for the transaction set.
Notes: EXAMPLE: BSN*00*987654321*19990514*1005*0001~

Data Element Summary

	<u>Ref.</u>	<u>Data</u>	<u>Attributes</u>
	<u>Des.</u>	<u>Element</u> <u>Name</u>	
M	BSN01	353 Transaction Set Purpose Code Code identifying purpose of transaction set 00 Original 07 Duplicate	M ID 2/2
M	BSN02	396 Shipment Identification A unique control number assigned by the original shipper to identify a specific shipment	M AN 2/30
M	BSN03	373 Date Date expressed as CCYYMMDD	M DT 8/8
M	BSN04	337 Time Time expressed in 24-hour clock time as follows: HHMM, or HHMMSS, or HHMMSSD, or HHMMSSDD, where H = hours (00-23), M = minutes (00-59), S = integer seconds (00-59) and DD = decimal seconds; decimal seconds are expressed as follows: D = tenths (0-9) and DD = hundredths (00-99)	M TM 4/4
	BSN05	1005 Hierarchical Structure Code Code indicating the hierarchical application structure of a transaction set that utilizes the HL segment to define the structure of the transaction set 0001 Shipment, Order, Packaging, Item 0002 Shipment, Order, Item, Packaging	O ID 4/4

Segment: **HL** Hierarchical Level

Position: 010

Loop: HL Mandatory

Level: Detail

Usage: Mandatory

Max Use: 1

Purpose: To identify dependencies among and the content of hierarchically related groups of data segments

- Comments:**
- 1 The HL segment is used to identify levels of detail information using a hierarchical structure, such as relating line-item data to shipment data, and packaging data to line-item data.
The HL segment defines a top-down/left-right ordered structure.
 - 2 HL01 shall contain a unique alphanumeric number for each occurrence of the HL segment in the transaction set. For example, HL01 could be used to indicate the number of occurrences of the HL segment, in which case the value of HL01 would be "1" for the initial HL segment and would be incremented by one in each subsequent HL segment within the transaction.
 - 3 HL02 identifies the hierarchical ID number of the HL segment to which the current HL segment is subordinate.
 - 4 HL03 indicates the context of the series of segments following the current HL segment up to the next occurrence of an HL segment in the transaction. For example, HL03 is used to indicate that subsequent segments in the HL loop form a logical grouping of data referring to shipment, order, or item-level information.
 - 5 HL04 indicates whether or not there are subordinate (or child) HL segments related to the current HL segment.

Notes: EXAMPLE: HL*1**S~

Data Element Summary

Ref.	Data		
<u>Des.</u>	<u>Element</u>	<u>Name</u>	<u>Attributes</u>
M	HL01	628 Hierarchical ID Number	M AN 1/12
		A unique number assigned by the sender to identify a particular data segment in a hierarchical structure	
M	HL03	735 Hierarchical Level Code	M ID 1/2
		Code defining the characteristic of a level in a hierarchical structure	
		S Shipment	

Segment: **TD1** Carrier Details (Quantity and Weight)
Position: 110
Loop: HL Mandatory
Level: Detail
Usage: Mandatory
Max Use: 20
Purpose: To specify the transportation details relative to commodity, weight, and quantity
Comments:
Notes: EXAMPLE: TD1*CTN*2****G*140*LB~

Data Element Summary

<u>Ref.</u>	<u>Data</u>	<u>Name</u>	<u>Attributes</u>
<u>Des.</u>	<u>Element</u>		
TD101	103	Packaging Code Code identifying the type of packaging; Part 1: Packaging Form, Part 2: Packaging Material; if the Data Element is used, then Part 1 is always required CTN Carton	O AN 5/5
TD102	80	Lading Quantity Number of units (pieces) of the lading commodity	X N0 1/7
TD106	187	Weight Qualifier Code defining the type of weight G Gross Weight	O ID 1/2
TD107	81	Weight Numeric value of weight	X R 1/8
TD108	355	Unit or Basis for Measurement Code Code specifying the units in which a value is being expressed, or manner in which a measurement has been taken LB Pound	X ID 2/2

Segment: **TD5** Carrier Details (Routing Sequence/Transit Time)
Position: 120
Loop: HL Mandatory
Level: Detail
Usage: Mandatory
Max Use: 12
Purpose: To specify the carrier and sequence of routing and provide transit time information
Comments: 1 When specifying a routing sequence to be used for the shipment movement in lieu of specifying each carrier within the movement, use TD502 to identify the party responsible for defining the routing sequence, and use TD503 to identify the actual routing sequence, specified by the party identified in TD502.
Notes: EXAMPLE: TD5*0*2*UPSN~

Data Element Summary

<u>Ref.</u>	<u>Data</u>	<u>Name</u>	<u>Attributes</u>
<u>Des.</u>	<u>Element</u>		
TD501	133	Routing Sequence Code	O ID 1/2
		Code describing the relationship of a carrier to a specific shipment movement	
		1 1st Carrier after Origin Carrier	
		2 2nd Carrier after Origin Carrier	
		3 3rd Carrier after Origin Carrier	
		A Origin Carrier, Agent's Routing (Rail)	
		B Origin/Delivery Carrier (Any Mode)	
		O Origin Carrier (Air, Motor, or Ocean)	
		S Origin Carrier, Shipper's Routing (Rail)	
TD502	66	Identification Code Qualifier	X ID 1/2
		Code designating the system/method of code structure used for Identification Code (67)	
		2 Standard Carrier Alpha Code (SCAC)	
TD503	67	Identification Code	X AN 2/4
		Code identifying a party or other code	

Segment: **REF** Reference Identification
Position: 150
Loop: HL Mandatory
Level: Detail
Usage: Mandatory
Max Use: 2
Purpose: To specify identifying information
Comments:
Notes:

EXAMPLE: REF*BM*7777777~
 REF*CN*TL999995556666~

Data Element Summary

	<u>Ref. Des.</u>	<u>Data Element</u>	<u>Name</u>	<u>Attributes</u>
M	REF01	128	Reference Identification Qualifier Code qualifying the Reference Identification BB Authorization Number Proves that permission was obtained to provide a service BM Bill of Lading Number CN Carrier's Reference Number (PRO/Invoice)	M ID 2/2
>>	REF02	127	Reference Identification Reference information as defined for a particular Transaction Set or as specified by the Reference Identification Qualifier	X AN 1/30

Segment: **DTM** Date/Time Reference
Position: 200
Loop: HL Mandatory
Level: Detail
Usage: Mandatory
Max Use: 10
Purpose: To specify pertinent dates and times
Comments:
Notes:

EXAMPLE: DTM*011*19990405~

Data Element Summary

	<u>Ref.</u>	<u>Data</u>	<u>Name</u>	<u>Attributes</u>
	<u>Des.</u>	<u>Element</u>		
M	DTM01	374	Date/Time Qualifier	M ID 3/3
			Code specifying type of date or time, or both date and time	
			011 Shipped	
>>	DTM02	373	Date	X DT 8/8
			Date expressed as CCYYMMDD	

Segment: **HL** Hierarchical Level

Position: 010

Loop: HL Mandatory

Level: Detail

Usage: Mandatory

Max Use: 1

Purpose: To identify dependencies among and the content of hierarchically related groups of data segments

- Comments:**
- 1 The HL segment is used to identify levels of detail information using a hierarchical structure, such as relating line-item data to shipment data, and packaging data to line-item data.
The HL segment defines a top-down/left-right ordered structure.
 - 2 HL01 shall contain a unique alphanumeric number for each occurrence of the HL segment in the transaction set. For example, HL01 could be used to indicate the number of occurrences of the HL segment, in which case the value of HL01 would be "1" for the initial HL segment and would be incremented by one in each subsequent HL segment within the transaction.
 - 3 HL02 identifies the hierarchical ID number of the HL segment to which the current HL segment is subordinate.
 - 4 HL03 indicates the context of the series of segments following the current HL segment up to the next occurrence of an HL segment in the transaction. For example, HL03 is used to indicate that subsequent segments in the HL loop form a logical grouping of data referring to shipment, order, or item-level information.
 - 5 HL04 indicates whether or not there are subordinate (or child) HL segments related to the current HL segment.

Notes: EXAMPLE: HL*2*1*O~

Data Element Summary

Ref.	Data		
<u>Des.</u>	<u>Element</u>	<u>Name</u>	<u>Attributes</u>
M	HL01	628 Hierarchical ID Number	M AN 1/12
		A unique number assigned by the sender to identify a particular data segment in a hierarchical structure	
>>	HL02	734 Hierarchical Parent ID Number	O AN 1/12
		Identification number of the next higher hierarchical data segment that the data segment being described is subordinate to	
M	HL03	735 Hierarchical Level Code	M ID 1/2
		Code defining the characteristic of a level in a hierarchical structure	
		O	Order

MODELLS SPORTING GOODS EDI SPECIFICATIONS

Segment: **PRF** Purchase Order Reference
Position: 050
Loop: HL Mandatory
Level: Detail
Usage: Mandatory
Max Use: 1
Purpose: To provide reference to a specific purchase order
Comments:
Notes:

EXAMPLE: PRF*04512345***19990514~
 Do not place a "-" between the third and fourth digits
 OR
 PRF*12345***19990414
 The second example must be sent with a REF*DP = Modells dept. number.

Data Element Summary

<u>Ref.</u>	<u>Data</u>	<u>Element</u>	<u>Name</u>	<u>Attributes</u>
M		324	Purchase Order Number	M AN 5/8
			Identifying number for Purchase Order assigned by the orderer/purchaser	
			xxxxaaaa xxx = Modell's department number aaaaa = purchase order control number	
			DO NOT PUT A "-" BETWEEN THE 3RD AND 4TH DIGITS	
			OR	
			aaaaa = purchase order control number	
		373	Date	O DT 8/8
			Date expressed as CCYYMMDD	

Segment: **REF** Reference Identification
Position: 150
Loop: HL Mandatory
Level: Detail
Usage: Mandatory
Max Use: 4
Purpose: To specify identifying information
Comments:
Notes:

EXAMPLE: REF*DP*045~
 REF*IT*2803833025~
 REF*IV*5784400~
 REF*VN*2568860~

Data Element Summary

	<u>Ref. Des.</u>	<u>Data Element</u>	<u>Name</u>	<u>Attributes</u>
M	REF01	128	Reference Identification Qualifier Code qualifying the Reference Identification DP Department Number IT Internal Customer Number IV Seller's Invoice Number VN Vendor Order Number	M ID 2/3
>>	REF02	127	Reference Identification Reference information as defined for a particular Transaction Set or as specified by the Reference Identification Qualifier Application Value List: 010 boys infants 011 license goods 012 kids fashion 013 kids license apparel 014 ladies wear 015 underwear 016 socks 017 work clothes 018 long sleeve shirts 019 short sleeve shirts 020 big and tall men 021 sweats and warm ups 022 outerwear 023 jeans and slacks 024 assorted shorts 025 swimwear 026 headwear 027 accessories 028 basic sweats 029 030 luggage 031 fishing 032 hunting 033 camping 034 exercise 035 license apparel	X AN 1/30

MODELLS SPORTING GOODS EDI SPECIFICATIONS

- 036 team sports
- 037 hockey
- 038 racket sports
- 039 baseball
- 040 golf
- 041 water and snow sports
- 042 games
- 043 bowling
- 044 skates
- 045 mens sneakers
- 046 womens sneakers
- 047 kids sneakers
- 048 Athletic Footwear
- 049 other shoes and Access.
- 050 shoe accessories
- 051 proformance gear
- 052 WOMENS APPAREL
- 053 SANDALS

MODELLS SPORTING GOODS EDI SPECIFICATIONS

Segment: **N1** Name
Position: 220
Loop: N1 Mandatory
Level: Detail
Usage: Mandatory
Max Use: 1
Purpose: To identify a party by type of organization, name, and code
Comments: 1 This segment, used alone, provides the most efficient method of providing organizational identification. To obtain this efficiency the "ID Code" (N104) must provide a key to the table maintained by the transaction processing party.
 2 N105 and N106 further define the type of entity in N101.
Notes: EXAMPLE: NI*MA*MODELLS SPORTING GOODS*92*096~

Data Element Summary

Ref.	Data Element	Name	Attributes
M	N101	98 Entity Identifier Code Code identifying an organizational entity, a physical location, property or an individual MA Party for whom Item is Ultimately Intended Z7 Mark-for Party The party for whom the needed material is intended	M ID 2/2
	N102	93 Name Free-form name	X AN 1/20
	N103	66 Identification Code Qualifier Code designating the system/method of code structure used for Identification Code (67) 92 Assigned by Buyer or Buyer's Agent	X ID 2/2
	N104	67 Identification Code Code identifying a party or other code Modells sporting goods 3 digit store number.	X AN 3/3

Segment: **HL** Hierarchical Level

Position: 010

Loop: HL Mandatory

Level: Detail

Usage: Mandatory

Max Use: 1

Purpose: To identify dependencies among and the content of hierarchically related groups of data segments

- Comments:**
- 1 The HL segment is used to identify levels of detail information using a hierarchical structure, such as relating line-item data to shipment data, and packaging data to line-item data.
The HL segment defines a top-down/left-right ordered structure.
 - 2 HL01 shall contain a unique alphanumeric number for each occurrence of the HL segment in the transaction set. For example, HL01 could be used to indicate the number of occurrences of the HL segment, in which case the value of HL01 would be "1" for the initial HL segment and would be incremented by one in each subsequent HL segment within the transaction.
 - 3 HL02 identifies the hierarchical ID number of the HL segment to which the current HL segment is subordinate.
 - 4 HL03 indicates the context of the series of segments following the current HL segment up to the next occurrence of an HL segment in the transaction. For example, HL03 is used to indicate that subsequent segments in the HL loop form a logical grouping of data referring to shipment, order, or item-level information.
 - 5 HL04 indicates whether or not there are subordinate (or child) HL segments related to the current HL segment.

Notes: EXAMPLE: HL*3*2*P~

Data Element Summary

Ref.	Data		
<u>Des.</u>	<u>Element</u>	<u>Name</u>	<u>Attributes</u>
M	HL01	628 Hierarchical ID Number	M AN 1/12
		A unique number assigned by the sender to identify a particular data segment in a hierarchical structure	
>>	HL02	734 Hierarchical Parent ID Number	O AN 1/12
		Identification number of the next higher hierarchical data segment that the data segment being described is subordinate to	
M	HL03	735 Hierarchical Level Code	M ID 1/2
		Code defining the characteristic of a level in a hierarchical structure	
		P	Pack

Segment: **MAN** Marks and Numbers
Position: 190
Loop: HL Mandatory
Level: Detail
Usage: Mandatory
Max Use: >1
Purpose: To indicate identifying marks and numbers for shipping containers
Comments:

- 1 When MAN01 contains code "UC" (U.P.C. Shipping Container Code) and MAN05/MAN06 contain a range of ID numbers, MAN03 is not used. The reason for this is that the U.P.C. Shipping Container code is the same on every carton that is represented in the range in MAN05/MAN06.
- 2 MAN03 and/or MAN06 are only used when sending a range(s) of ID numbers. When both MAN02/MAN03 and MAN05/MAN06 are used to send ranges of ID numbers, the integrity of the two ID numbers must be maintained.

Notes: EXAMPLE: MAN*GM*00000521775169910412~

 UCC/EAN-128 Serial Shipping Container Code (SSCC-18) IS MANDATORY

 THIS NUMBER MUST BE UNIQUE. ALL DUPLICATE CARTON NUMBERS WILL BE BYPASSED AND DELETED.
 THIS NUMBER CAN NOT BE ZERO FILLED.

Data Element Summary

Ref.	Data	Name	Attributes
<u>Des.</u>	<u>Element</u>		
M	MAN01	88 Marks and Numbers Qualifier	M ID 1/2
		Code specifying the application or source of Marks and Numbers (87)	
		GM SSCC-18 and Application Identifier	
M	MAN02	87 Marks and Numbers	M AN 20/20
		Marks and numbers used to identify a shipment or parts of a shipment	

Segment: **HL** Hierarchical Level

Position: 010

Loop: HL Mandatory

Level: Detail

Usage: Mandatory

Max Use: 1

Purpose: To identify dependencies among and the content of hierarchically related groups of data segments

- Comments:**
- 1 The HL segment is used to identify levels of detail information using a hierarchical structure, such as relating line-item data to shipment data, and packaging data to line-item data.
The HL segment defines a top-down/left-right ordered structure.
 - 2 HL01 shall contain a unique alphanumeric number for each occurrence of the HL segment in the transaction set. For example, HL01 could be used to indicate the number of occurrences of the HL segment, in which case the value of HL01 would be "1" for the initial HL segment and would be incremented by one in each subsequent HL segment within the transaction.
 - 3 HL02 identifies the hierarchical ID number of the HL segment to which the current HL segment is subordinate.
 - 4 HL03 indicates the context of the series of segments following the current HL segment up to the next occurrence of an HL segment in the transaction. For example, HL03 is used to indicate that subsequent segments in the HL loop form a logical grouping of data referring to shipment, order, or item-level information.
 - 5 HL04 indicates whether or not there are subordinate (or child) HL segments related to the current HL segment.

Notes: EXAMPLE: HL*4*3*1~

Data Element Summary

Ref.	Data		
<u>Des.</u>	<u>Element</u>	<u>Name</u>	<u>Attributes</u>
M	HL01	628 Hierarchical ID Number	M AN 1/12
		A unique number assigned by the sender to identify a particular data segment in a hierarchical structure	
>>	HL02	734 Hierarchical Parent ID Number	O AN 1/12
		Identification number of the next higher hierarchical data segment that the data segment being described is subordinate to	
M	HL03	735 Hierarchical Level Code	M ID 1/2
		Code defining the characteristic of a level in a hierarchical structure	
		I	Item

Segment: **LIN** Item Identification
Position: 020
Loop: HL Mandatory
Level: Detail
Usage: Mandatory
Max Use: 1
Purpose: To specify basic item identification data
Comments: 1 See the Data Dictionary for a complete list of IDs.
 2 LIN02 through LIN31 provide for fifteen different product/service IDs for each item.
 For example: Case, Color, Drawing No., U.P.C. No., ISBN No., Model No., or SKU.
Notes: EXAMPLE: LIN**UP*05217705185~

Data Element Summary

Ref.	Data	Name	Attributes
<u>Des.</u>	<u>Element</u>		
M	LIN02	235 Product/Service ID Qualifier	M ID 2/2
		Code identifying the type/source of the descriptive number used in Product/Service ID (234)	
		UK U.P.C./EAN Shipping Container Code (1-2-5-5-1)	
		A 14-digit code that uniquely identifies the manufacturer's shipping unit, including the packaging indicator and check digit; the first digit is the packaging indicator, the next two digits are the number system characters, the next five digits are the manufacturer ID number, the second five digits are the item code, and the final digit is the check digit	
		UP U.P.C. Consumer Package Code (1-5-5-1)	
M	LIN03	234 Product/Service ID	M AN 12/12
		Identifying number for a product or service	
		UPC CODE (1-5-5-1)	

Segment: **SN1** Item Detail (Shipment)
Position: 030
Loop: HL Mandatory
Level: Detail
Usage: Mandatory
Max Use: 1
Purpose: To specify line-item detail relative to shipment
Comments: 1 SN103 defines the unit of measurement for both SN102 and SN104.
Notes: EXAMPLE: SN1**1*EA~

Data Element Summary

	<u>Ref.</u>	<u>Data</u>	<u>Name</u>	<u>Attributes</u>
	<u>Des.</u>	<u>Element</u>		
M	SN102	382	Number of Units Shipped	M R 1/10
			Numeric value of units shipped in manufacturer's shipping units for a line item or transaction set	
M	SN103	355	Unit or Basis for Measurement Code	M ID 2/2
			Code specifying the units in which a value is being expressed, or manner in which a measurement has been taken	
			CA	Case
			DZ	Dozen
			EA	Each

Segment: **CTT** Transaction Totals
Position: 010
Loop:
Level: Summary
Usage: Mandatory
Max Use: 1
Purpose: To transmit a hash total for a specific element in the transaction set
Comments: 1 This segment is intended to provide hash totals to validate transaction completeness and correctness.
Notes: EXAMPLE: CTT*88~

Data Element Summary

Ref.	Data		
<u>Des.</u>	<u>Element</u>	<u>Name</u>	<u>Attributes</u>
M	CTT01	354 Number of Line Items	M N0 1/6
		Total number of line items in the transaction set	

Segment: **SE** Transaction Set Trailer
Position: 020
Loop:
Level: Summary
Usage: Mandatory
Max Use: 1
Purpose: To indicate the end of the transaction set and provide the count of the transmitted segments (including the beginning (ST) and ending (SE) segments)
Comments: 1 SE is the last segment of each transaction set.
Notes: EXAMPLE: SE*16*0001~

Data Element Summary

	Ref.	Data		Attributes
	Des.	Element	Name	
M	SE01	96	Number of Included Segments	M N0 1/6
			Total number of segments included in a transaction set including ST and SE segments	
M	SE02	329	Transaction Set Control Number	M AN 4/9
			Identifying control number that must be unique within the transaction set functional group assigned by the originator for a transaction set	