



on tv & online

Transaction Set **860**
Version 4010

EDI 860 Purchase Order Change and Cancellation

ANSI Standard Version 4010

Revision: June 19,2000

For Warehouse Fulfillment Only

Overview

Header

All information contained in the BCH segment N1 segment that contains vendor name and number and will be present on all 860's.

The N1 segment that contains vendor name and number will also be

All other segments will only be present if there is a change to that information.

Detail

In the detail loops the HSN item number and HSN item description will always be present.

Depending on what is provided by the vendor, the vendor item number and/or UPC will always be present.

The POC 02 will prompt the change being made to the individual line item.

If there is more than one change per line item, additional detail loops will be provided detailing each change.

Quantities, unit cost, category and warehouse allocation will only be present if there is a change from the original Purchase Order.

SEGMENT ISA - INTERCHANGE CONTROL HEADER

PURPOSE

To start and identify an interchange of one or more functional groups and interchange-related control segments.

EDI STANDARD SEGMENT

ISA	*	I01	*	I02	*	I03	*	I04	*	I05	*
		I06	*	I07	*	I08	*	I09	*	I10	*
		I11	*	I12	*	I13	*	I14	*	I15	~

HSN SUBSET OF EDI STANDARD SEGMENT

Same as the EDI Standard Segment

ELEMENT NUMBER	ELEMENT NAME/DESCRIPTION	ELEMENT ATTRIBUTES	COMMENTS
ISA	SEGMENT IDENTIFIER		"ISA"
I01 001	AUTHORIZATION INFORMATION QUALIFIER Code to identify the type of information in the Authorization Information.	(M IS 2/2)	" 00 "
I02 002	AUTHORIZATION INFORMATION Information used for additional identification or authorization of the sender or the data in the interchange.	(M AN 10/10)	blank
I03 003	SECURITY COMMUNICATION QUALIFIER Code to identify the type of information in the Security Information.	(M ID 2/2)	" 00 "
I04 004	SECURITY INFORMATION This is used for identifying the security information about the sender of the data in the interchange.	(M AN 10/10)	blank

Warehouse Fulfillment

I05 005	INTERCHANGE ID QUALIFIER Qualifier to designate the system/method of code structure used to designate the sender or receiver ID element being qualified.	(M ID 2/2)	HSN interchange qualifier. " 12 "
I06 006	INTERCHANGE SENDER ID Identification code published by the sender for other parties to use as the receiver ID to route data to them. The sender always codes this number in the sender ID element.	(M ID 15/15)	HSN interchange ID. " 8135728585 " "8135728585T" (for testing)
I05 007	INTERCHANGE ID QUALIFIER Qualifier to designate the system/method of code structure used to designate the sender or receiver ID element being qualified.	(M ID 2/2)	Your interchange qualifier.
I07 008	INTERCHANGE RECEIVER ID Identification code published by the sender for other parties to use as the receiver ID to route data to them.	(M ID 15/15)	Your interchange ID.
I08 009	INTERCHANGE DATE Date of the interchange.	(M DT 6/6)	Interchange creation date (YYMMDD)
I09 010	INTERCHANGE TIME Time of the interchange	(M TM 4/4)	Interchange creation time. HHMM
I10 011	INTERCHANGE CONTROL STANDARDS IDENTIFIER Code to identify the agency responsible for the control standard used..	(M ID 1/1)	" U "
I11 012	INTERCHANGE CONTROL VERSION NUMBER Version number covers the interchange control segments and functional group control segments.	((M ID 5/5)	" 00401"
I12 013	INTERCHANGE CONTROL NUMBER The number uniquely identifies the interchange data to the sender.	(M NO 9/9)	HSN sequential number

Warehouse Fulfillment

I13 014	ACKNOWLEDGMENT REQUESTED Code sent to request an interchange acknowledgment.	(M ID 1/1)	" 0 "
I14 015	TEST INDICATOR Code to indicate whether data enclosed by this interchange envelope is test or production.	(M ID 1/1)	" P " = production " T " = test
I15 016	SUBELEMENT SEPARATOR	(M AN 1/1)	" > "

Warehouse Fulfillment

480	VERSION/RELEASE/INDUSTRY	(M ID 1/12)	" 004010 "
008	ID CODE		version number

Version and release information of the EDI standard being used.

SEGMENT ST - TRANSACTION SET HEADER

PURPOSE

To indicate the start of a transaction set and to assign a control number.

EDI STANDARD SEGMENT

ST * 143 * 329 ~

HSN SUBSET OF EDI STANDARD SEGMENT

Same as EDI Standard Segment above.

ELEMENT NUMBER	ELEMENT NAME/DESCRIPTION	ELEMENT ATTRIBUTES	COMMENTS
ST	SEGMENT IDENTIFIER		"ST"
143 001	TRANSACTION SET IDENTIFIER CODE Code uniquely identifying a transaction set.	(M ID 3/3)	"860"
329 002	TRANSACTION SET CONTROL NUMBER Identifying control number assigned by the originator for a transaction set.	(M AN 4/9)	Unique control number identifying a transaction set.

SEGMENT BCH - BEGINNING SEGMENT FOR PURCHASE ORDER

PURPOSE

To indicate purpose of 860, whether cancellation or change. BCH will be present for all 860s.

EDI STANDARD SEGMENT

BCH * 353 * 92 * 324 * 328 *
323 * 367 * 587 * 1019 ~

HSN SUBSET OF EDI STANDARD SEGMENT

BCH * 353 * 92 * 324 * 328 * 373 ~

ELEMENT NUMBER	ELEMENT NAME/DESCRIPTION	ELEMENT ATTRIBUTES	COMMENTS
BCH	SEGMENT IDENTIFIER		"BCH"
353 001	TRANSACTION SET PURPOSE CODE Code identifying purpose of transaction set.	(M ID 2/2)	" 01 " = Cancellation " 04 " = Change
92 002	PURCHASE ORDER TYPE CODE Code specifying the type of P O	(M ID 2/2)	" SA "
324 003	PURCHASE ORDER NUMBER Identifying number assigned by the orderer/purchaser.	(M AN 1/22)	HSN Purchase order number (Length ≤ 10)
328 004	RELEASE NUMBER Number identifying a release against a Purchase Order .	(O AN 1/30)	"NOT USED"
327 005	CHANGE ORDER SEQUENCE NUMBER	(O AN 1/8)	"NOT USED"
373 006	PURCHASE ORDER DATE Date assigned by the purchaser to Purchase Order	(M DT 8/8)	HSN Order Date (CCYYMMDD)

SEGMENT FOB – FOB RELATED INSTRUCTIONS

PURPOSE

To specify identifying numbers.

EDI STANDARD SEGMENT

FOB	*	146	*	309	*	352	*	334	*	335	*
		309	*	352	*	54	*	352	~		

HSN SUBSET OF EDI STANDARD SEGMENT

FOB	*	146	*	309	*	352	~
-----	---	-----	---	-----	---	-----	---

ELEMENT NUMBER	ELEMENT NAME/DESCRIPTION	ELEMENT ATTRIBUTES	COMMENTS
FOB	SEGMENT IDENTIFIER		"FOB"
146 001	SHIPMENT METHOD OF PAYMENT Code specifying payment method	(O ID 2/2)	" PP " = Pre-Paid by Buyer " CC " = Collect
309 002	LOCATION QUALIFIER Code identifying type of location referencing FOB03.	(C ID 1/2)	" NS " = City/State from Points
352 003	DESCRIPTION A free form description to clarify the related data elements and their content.	(O AN 1/80)	City and State of Point of Departure.

SEGMENT ITD – TERMS OF SALE

PURPOSE

Terms of Sale/Deferred Terms of Sale.

EDI STANDARD SEGMENT

ITD	*	336	*	333	*	338	*	370	*	351	*	446	*
		386	*	362	*	388	*	389	*	342	*	352	*
		765	*	107	*	954	~						

HSN SUBSET OF EDI STANDARD SEGMENT

ITD	*	336	*	333	*	338	*	370	*	446	*	386	*
		362	~										

ELEMENT NUMBER	ELEMENT NAME/DESCRIPTION	ELEMENT ATTRIBUTES	COMMENTS
ITD	SEGMENT IDENTIFIER		" ITD "
336 001	TERMS TYPE CODE Code identifying type of payment terms.	(C ID 2/2)	" 14 "
333 002	TERMS BASIS DATE CODE Code identifying the beginning of the terms period (1=shipdate, 2=delivery date, 3=invoice date)	(C ID 1 /2)	" 2 "
338 003	TERMS DISCOUNT PERCENT	(O R 1/6)	"NOT USED"
370 004	TERMS DISCOUNT DUE DATE	(C DT 8/8)	"NOT USED"
351 005	TERMS DISCOUNT DAYS DUE	(C N0 1/3)	"NOT USED"
446 006	TERMS NET DUE DATE	(O DT 8/8)	"NOT USED"
386 007	TERMS NET DAYS	(O N0 1/3)	"NOT USED"
362 008	TERMS DISCOUNT AMOUNT	(O N2 1/10)	"NOT USED"
388 009	TERMS DEFERRED DUE DATE	(O DT 6/6)	"NOT USED"
389 010	DEFERRED AMOUNT DUE	(C N2 1/10)	"NOT USED"
342 011	PERCENT OF INVOICE PAYABLE	(C R 1/5)	"NOT USED"

NOTE REGARDING THE COMMENTS FIELD: Actual values are contained within quotes

Warehouse Fulfillment

352	DESCRIPTION	(O AN 1/80)	Terms of Sale
012	Free form description of terms		
765	DAY OF MONTH	(C NO 1/2)	"NOT USED"
013			
107	PAYMENT METHOD CODE	(O ID 1/2)	"NOT USED"
014			
954	PERCENT	(O R 1/10)	"NOT USED"
015			

SEGMENT DTM – DATE/TIME REFERENCE

PURPOSE

To specify identifying numbers.

EDI STANDARD SEGMENT

DTM * 374 * 373 * 337 * 623 * 624 ~

HSN SUBSET OF EDI STANDARD SEGMENT

DTM * 374 * 373 ~

ELEMENT NUMBER	ELEMENT NAME/DESCRIPTION	ELEMENT ATTRIBUTES	COMMENTS
DTM	SEGMENT IDENTIFIER		"DTM"
374 001	DATE/TIME QUALIFIER Code specifying date and/or time.	(C ID 3/3)	" 010 " = Requested Ship Date
373 002	REFERENCE NUMBER Reference number or identification number as defined for a particular Transaction Set. or as specified by the Reference Number Qualifier.	(O DT 8/8)	Date CCYYMMDD

Warehouse Fulfillment

SEGMENT N1 - NAME

PURPOSE

To specify identifying numbers.

EDI STANDARD SEGMENT

N1 * 98 * 93 * 66 * 67 ~

HSN SUBSET OF EDI STANDARD SEGMENT

N1 * 128 * 127 * 66 * 67 ~

ELEMENT NUMBER	ELEMENT NAME/DESCRIPTION	ELEMENT ATTRIBUTES	COMMENTS
N1	SEGMENT IDENTIFIER		"N1"
98 001	ENTITY IDENTIFIER CODE	(M ID 2/3)	"VN" = Vendor
93 002	NAME Free form name.	(M AN 1/60)	Name of Vendor
66 003	IDENTIFICATION CODE QUALIFIER Reference number or identification number as defined for a particular Transaction Set. or as specified by the Reference Number Qualifier.	(M ID 1/2)	"92" = Assigned by Buyer
67 004	IDENTIFICATION CODE A free form description to clarify the related data elements and their content.	(M AN 2/80)	HSN Internal Vendor Number

SEGMENT POC - PO BASELINE ITEM DETAIL

PURPOSE

To specify basic and most frequently used line item data.

EDI STANDARD SEGMENT

POC	*	350	*	670	*	330	*	671	*	355	*
		212	*	639	*	235	*	234	*	235	*
		234	*	235	*	234	*	235	*	234	*
		235	*	234	*	235	*	234	*	235	*
		234	*	235	*	234	*	235	*	234	~

HSN SUBSET OF EDI STANDARD SEGMENT

POC	*	350	*	670	*	330	*	671	*
		212	*	639	*	235	*	234	*
		235	*	234	*	235	*	~	*

ELEMENT NUMBER	ELEMENT NAME/DESCRIPTION	ELEMENT ATTRIBUTES	COMMENTS
POC	SEGMENT IDENTIFIER		"POC"
350 001	ASSIGNED IDENTIFICATION Alphanumeric characters assigned for differentiation within a transaction set.	(M AN 1/11)	HSN PO Line number (Length ≤ 2)
670 002	CHANGE OR RESPONSE TYPE CODE	(M ID 2/2)	AI Add Item DI Delete Item PC Price Change QD Quantity Decrease QI Quantity Increase RQ Change Warehouse Allocation CE Change Unit of Measure CA Change Vendor SKU CA Change UPC CE Change Category
330 003	QUANTITY ORDERED	(O R 1/9)	Original PO quantity
671 004	QUANTITY LEFT TO RECEIVE	(C R 1/9)	Incremental change if code is QD or QI

NOTE REGARDING THE COMMENTS FIELD: Actual values are contained within quotes

Warehouse Fulfillment

355 005	UNIT OR BASIS FOR MEASUREMENT CODE Code identifying the type of unit price for an item.	(C ID 2/2)	Unit of Measure
212 006	UNIT PRICE Code identifying the type of unit price for an item.	(C R 1/17)	Unit Cost
639 007	BASIS OF UNIT PRICE CODE Code identifying the type of unit price for an item	(O ID 2/2)	"LE"
235 008	PRODUCT/SERVICE ID QUALIFIER Code identifying type of descriptive number in Product ID.	(C ID 2/2)	HSN "VN " (Vendor's style number qualifier)
234 009	PRODUCT/SERVICE ID Identifying number for a product..	(O AN 1/48)	HSN Vendors Item number
235 010	PRODUCT/SERVICE ID QUALIFIER Code identifying type of descriptive number in Product ID.	(M ID 2/2)	HSN "IT " (Buyer's style number qualifier)
234 011	PRODUCT/SERVICE ID Identifying number for a product..	(M AN 1/48)	HSN HSN's Item number (Length = 15 maximum)
235 012	PRODUCT/SERVICE ID QUALIFIER Code identifying type of descriptive number in Product ID.	(C ID 2/2)	HSN "UP " Universal Product Code UPC
234 013	PRODUCT/SERVICE ID Identifying number for a product..	(O AN 1/48)	HSN UPC if available

SEGMENT PID - PRODUCT/ITEM DESCRIPTION

PURPOSE

To describe a product or process in coded or free form format.

EDI STANDARD SEGMENT

PID	*	349	*	750	*	559	*
		751	*	352	*	752	~

HSN SUBSET OF EDI STANDARD SEGMENT

PID	*	349	*	*	*	*	352	~
-----	---	-----	---	---	---	---	-----	---

ELEMENT NUMBER	ELEMENT NAME/DESCRIPTION	ELEMENT ATTRIBUTES	COMMENTS
PID	SEGMENT IDENTIFIER		"PID"
349 001	ITEM DESCRIPTION TYPE Code indicating the format of a description.	(C ID 1/1)	HSN " F "
352 005	DESCRIPTION A free form description to clarify the related data elements and their content.	(O AN 1/80)	HSN Item description (Max length = 40)

SEGMENT SDQ - SPECIAL SERVICES

PURPOSE

To specify special conditions or services associated with the purchased product.

EDI STANDARD SEGMENT

SDQ	*	355	*	66	*	67	*	380	*
		67	*	380	~				

HSN SUBSET OF EDI STANDARD SEGMENT

SDQ	*	355	*	66	*	67	*	380	*
		67	*	380	~				

ELEMENT NUMBER	ELEMENT NAME/DESCRIPTION	ELEMENT ATTRIBUTES	COMMENTS
SDQ	SEGMENT IDENTIFIER		"SDQ"
355 001	UNIT OF MEASUREMENT CODE Code specifying the units in which a value is being expressed	(O ID 2/2)	"EA"
66 002	IDENTIFICATION CODE QUALIFIER Code identifying the warehouse receiving the goods.	(C ID 1/2)	"92" = Assigned by buyer
67 003	IDENTIFICATION CODE Code identifying the warehouse receiving the goods	(O AN 2/80)	Salem = "97" Waterloo = "98" Showroom = "01" Jewelry = "99" Fontana = "96" RTW = "95"
380 004	QUANTITY Quantity	(O R 1/15)	Quantity
67 005	IDENTIFICATION CODE Code identifying the warehouse receiving the goods.	(O AN 2/80)	Salem = "97" Waterloo = "98" If being shipped to more than one warehouse
380 006	QUANTITY Quantity	(O R 1/15)	Quantity If being shipped to more than one warehouse

SEGMENT TC2 – COMMODITY

PURPOSE

To identify commodity or group of commodities.

EDI STANDARD SEGMENT

TC2 * 23 * 22 ~

HSN SUBSET OF EDI STANDARD SEGMENT

TC2 * 23 * 22 ~

ELEMENT NUMBER	ELEMENT NAME/DESCRIPTION	ELEMENT ATTRIBUTES	COMMENTS
TC2	SEGMENT IDENTIFIER		“TC2”
23 001	COMMODITY CODE QUALIFIER Code specifying commodity.	(C ID 1/1)	“ Q “ = Category
22 002	REFERENCE NUMBER Reference number or identification number as defined for a particular Transaction Set. or as specified by the Reference Number Qualifier.	(O AN 1/30)	HSN Product Category Code

Warehouse Fulfillment

SEGMENT AMT – MONETARY AMOUNT

PURPOSE

To specify identifying numbers.

EDI STANDARD SEGMENT

* * ~

HSN SUBSET OF EDI STANDARD SEGMENT

* * ~

ELEMENT NUMBER	ELEMENT NAME/DESCRIPTION	ELEMENT ATTRIBUTES	COMMENTS
AMT	SEGMENT IDENTIFIER		"AMT"
522 001	AMOUNT CODE QUALIFIER	(C ID ½)	" 1 " = Line item Total
782 002	MONETARY AMOUNT	(O N2 1/15)	Line Item Total

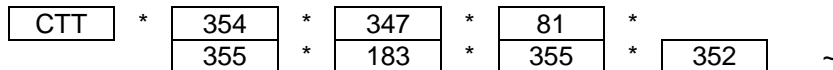
—

SEGMENT CTT - TRANSACTION TOTALS

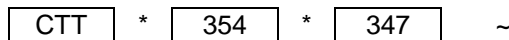
PURPOSE

To transmit a hash total for a specific element in the transaction set.

EDI STANDARD SEGMENT



HSN SUBSET OF EDI STANDARD SEGMENT



ELEMENT NUMBER	ELEMENT NAME/DESCRIPTION	ELEMENT ATTRIBUTES	COMMENTS
CTT	SEGMENT IDENTIFIER		"CTT"
354 001	NUMBER OF LINE ITEMS Total number of line items in the transaction set.	(M N0 1/6)	Total number of line items in the transaction.
347 002	HASH TOTAL Sum of totals of the specified data element.	(O R 1/10)	Total number of line items in the transaction.
81 003	WEIGHT Numeric value of weight.	(C R 1/10)	**NOT USED**
355 004	UNIT OF MEASUREMENT CODE Code specifying the units in which a value is being expressed.	(C ID 2/2)	**NOT USED**
183 005	VOLUME Value of volumetric measure.	(C R 1/8)	**NOT USED**
355 006	UNIT OF MEASUREMENT CODE Code specifying the units in which a value is being expressed.	(C ID 2/2)	**NOT USED**
352 007	DESCRIPTION Free form description to clarify the related data elements and their content.	(O AN 1/80)	**NOT USED**

SEGMENT SE - TRANSACTION SET TRAILER

PURPOSE

To indicate the end of the transaction set and provide the count of the transmitted segments (including the beginning (ST) and the ending (SE) segments).

EDI STANDARD SEGMENT

SE * 96 * 329 ~

HSN SUBSET OF EDI STANDARD SEGMENT

Same as the EDI Standard Segment.

	ELEMENT NAME/DESCRIPTION	ELEMENT ATTRIBUTES	COMMENTS
SE	SEGMENT IDENTIFIER		"SE"
96 001	NUMBER OF INCLUDED SEGMENTS Total number of segments included in a transaction set including ST and SE segments.	(M NO 1/10)	
329 002	TRANSACTION SET CONTROL NUMBER Identifying control number that must be unique within the transaction set functional group assigned by the originator for a transaction set.	(M AN 4/9)	HSN Our sequential number

SEGMENT GE - FUNCTIONAL GROUP TRAILER

PURPOSE

To indicate the end of a functional group and to provide control.

EDI STANDARD SEGMENT

GE	*	97	*	28	~
----	---	----	---	----	---

HSN SUBSET OF EDI STANDARD SEGMENT

Same as EDI Standard Segment

	ELEMENT NAME/DESCRIPTION	ELEMENT ATTRIBUTES	COMMENTS
GE	SEGMENT IDENTIFIER		" GE "
97 001	NUMBER OF TRANSACTION SETS INCLUDED. Count of ST segments within the Group.	(M NO 1/6)	Total number of transaction sets included in the GS – GE group.
28 002	GROUP CONTROL NUMBER Assigned number originated and maintained by the sender.	(M NO 1/9)	Same number as in GS segment (data element 06)

SEGMENT IEA - INTERCHANGE CONTROL TRAILER

PURPOSE

To define the end of an interchange of one or more functional groups and interchange-related control segments.

EDI STANDARD SEGMENT

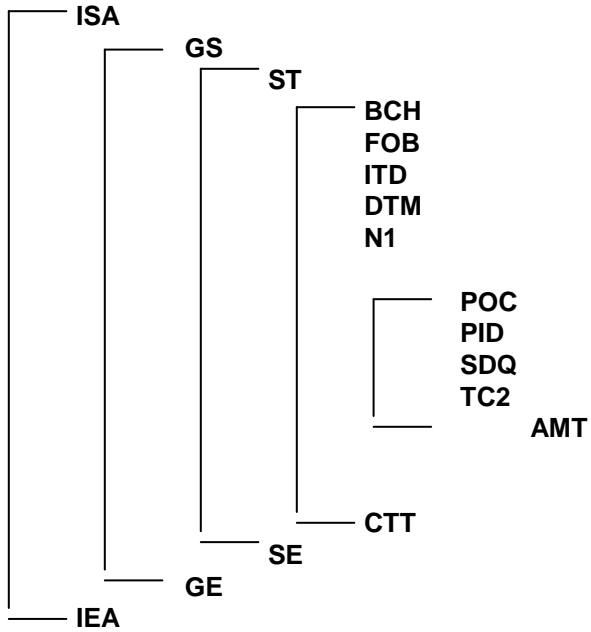
IEA * I16 * I12 ~

HSN SUBSET OF EDI STANDARD SEGMENT

Same as EDI Standard Segment.

	ELEMENT NAME/DESCRIPTION	ELEMENT ATTRIBUTES	COMMENTS
IEA	SEGMENT IDENTIFIER		“ IEA “
I16 001	NUMBER OF INCLUDED FUNCTIONAL GROUPS A count of the number of included groups included in a transmission.	(M N0 1/5)	Count of the GS segments in the Transmission.
I12 002	INTERCHANGE CONTROL NUMBER Number that uniquely identifies the interchange data. It is assigned by the sender.	(M N0 9/9)	Same number as in the ISA segment (data element 13)

TRANSACTION LAYOUT



SAMPLE TRANSACTION

ISA*00* *00* *12*8135728585 *01*999920703
*000509*1912*U*00401*000000394*0*P*>
GS*PC*8135728585*999920703*20000509*1912*000000394*X*004010
ST*860*0001
BCH*04*SA*301108***20000508
DTM*010*20000523
N1*VN*CLEAN CORPORATION*92*091774
POC*1*QD*15*2***LE*VN*GEG391800*IT*963822
PID*F****PLAT DOORNOCKER EARRINGS
SDQ*EA*92*87*13
AMT*1*185575
POC*2*QI*15*5***LE*VN*GEG392000*IT*963824
PID*F****PLAT CIRCLE DANGLE EARRINGS
SDQ*EA*92*87*20
AMT*1*325700
POC*3*PC***65*LE*VN*GCH315700*IT*963826
PID*F****PLAT STAR OF DAVID PDT
AMT*1*97500
POC*4*DI*****LE*VN*GEG391900*IT*963828
PID*F****PLAT COLUMN DANGLE EARRINGS
POC*5*UM***LB**LE*VN*315600*IT*963831
PID*F****PLANT FOOD
POC*6*CC*****LE*VN*963835*IT*963833043542
PID*F****PLAT HOOP LINK BRACELET:PLATIN:7"
TC2*Q*544
POC*6*QD*8*2**288.95*LE*VN*966407*IT*963836043544
PID*F****PLAT CURB BRACELET:PLATIN:7 1/2"
AMT*1*173370
POC*8*VS*****LE*VN*966410*IT*963839043605
PID*F****PLAT TRIPLE ROPE NECKLACE:PLATIN:13/14
CTT*8
SE*29*0001
GE*1*000000394
IEA*1*000000394
ISA*00* *00* *12*8135728585 *01*999920703
*000509*1912*U*00401*000000395*0*P*>
GS*PC*8135728585*999920703*20000509*1912*000000395*X*004010
ST*860*0001
BCH*01*SA*301111***20000509
N1*VN*CLEAN CORPORATION*92*091774
CTT*1
SE*5*0001
GE*1*000000395
IEA*1*000000395